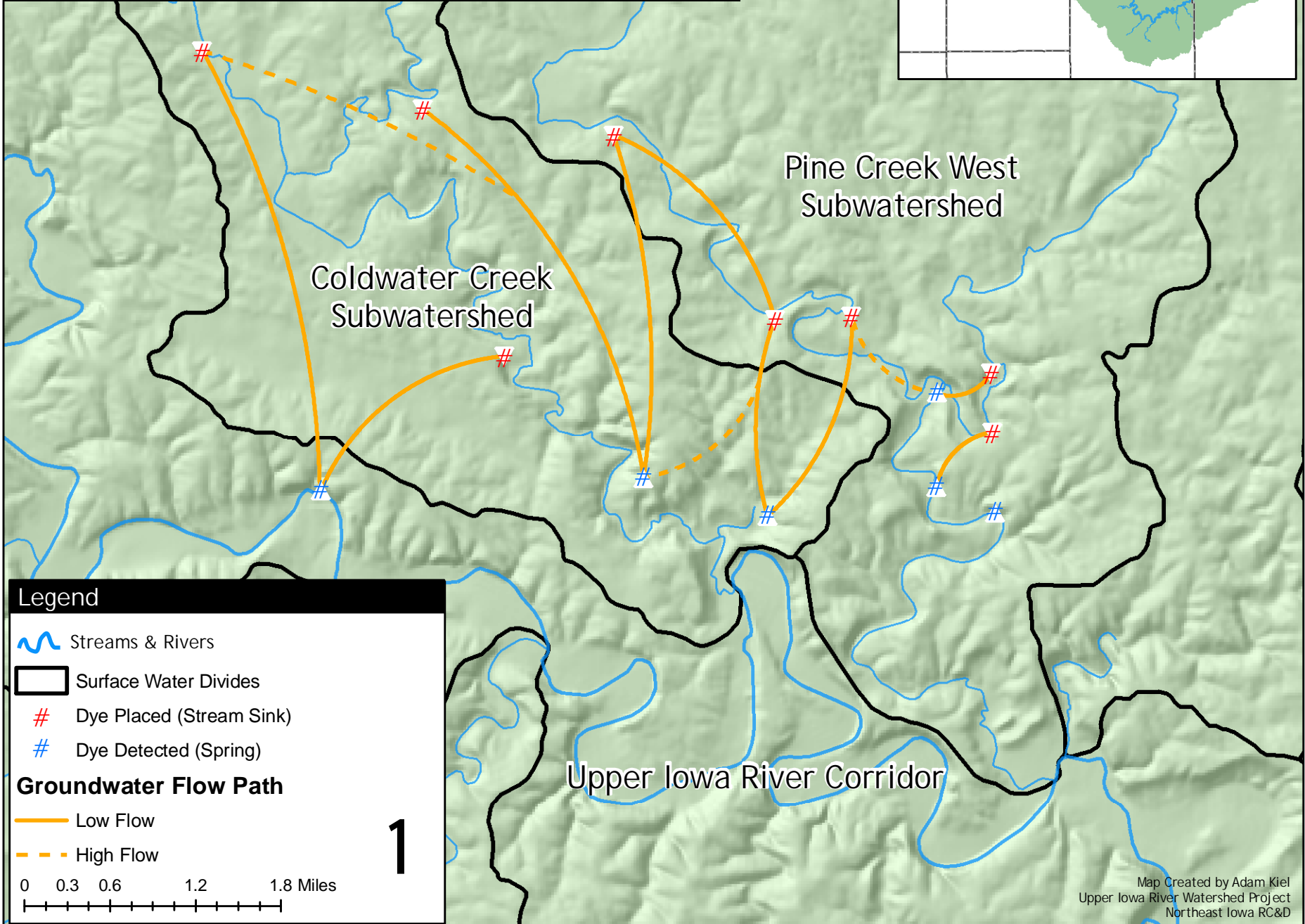
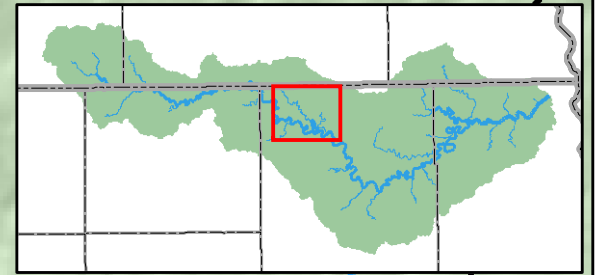


# Dye Tracing Upper Iowa River Watershed



**Legend**

- Streams & Rivers
- Surface Water Divides
- Dye Placed (Stream Sink)
- Dye Detected (Spring)

**Groundwater Flow Path**

- Low Flow
- High Flow

0 0.3 0.6 1.2 1.8 Miles

**1**

Map Created by Adam Kiel  
Upper Iowa River Watershed Project  
Northeast Iowa RC&D